

# Concourse Office Park

6310 - 6390 LBJ FREEWAY



## 6310 LBJ, SUITE 212

LEASING CONTACT:

**RYAN PHILLIPS**

Signature Asset Management, Inc.

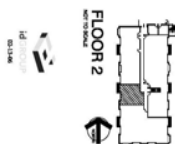
1603 LBJ Freeway, Suite 800

Dallas, Texas 75234

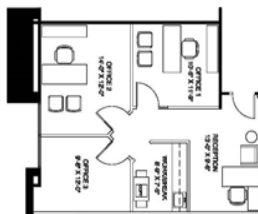
Phone 469.522.4308

Mobile 214.405.5636

[ryanphil@signatureasset.com](mailto:ryanphil@signatureasset.com)



AVAILABLE  
SUITE 212 752 RSF  
CONCOURSE OFFICE PARK  
6310 LBJ FREEWAY  
DALLAS, TEXAS



For Leasing Information Contact:  
Jill Anderson, 972.774.2022  
janderson@transwestern.com  
Mall Lusk, 972.774.2022  
mlusk@transwestern.com

TRANSWESTERN  
COMMERCIAL REAL ESTATE

### SUITE FEATURES

- 752 Rentable Square Feet
- Three Offices (Two window)
- Reception & Kitchen / Break
- Granite border in Reception
- Efficient space usage

### BUILDING FEATURES

- 485 + Underground Parking Spaces
- Free On-site Fitness Facility
- Tenant Lounge/Kitchen/Vending
- Free Conference Room
- Extensive LED Lighting Retrofit
- Multiple Fiber Optic Providers
- Very low electricity costs